

Colors of Love Quilt

Before You Start

- Skill Level: Advanced Beginner
- Quilt Size: 50"x50"
- Starch and press all fabric before cutting
- WOF = Width of Fabric
- RST= Right Sides Together
- Pattern assumes WOF to be 42"
- All seam allowances are 1/4"
- Press all seams open to reduce bulk in corners of the blocks

General Instructions

- Carefully read all instructions before beginning
- Choose the size you want
- There is no margin for error on these fabric requirements! You may need additional yardage for directional fabric or if you plan to fussy-cut
- Fabric requirements are listed for any 42" WOF quilting fabric

Supplies List:

- De-wrinkle spray/starch and ironing station
- Cutting mat and rotary cutter
- 12.5" square ruler or other ruler
- Fabric marking pen (optional)
- Clips or pins (optional)

**this pattern can use Yardage, or Scraps

Fabric

**can use Yardage, or Scraps

For this quilt, you will need:

Scraps - 23 colors, enough to create (1)3.5" square and (1)3.5"x6.5" rectangle for each color

Background - 2.5 yd

Backing - 3.5 yd

Cut

From Scraps (23) colors, each color:

(1) 3.5" square

(1) 3.5"x6.5" rectangle

From Background:

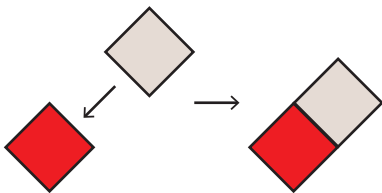
(23) 3.5" squares

(46) 7" squares, cut diagonally to make 92 triangles

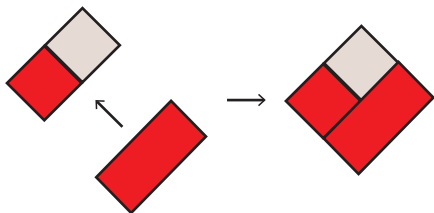
(4) 5.5"x10.5" rectangles

Sew

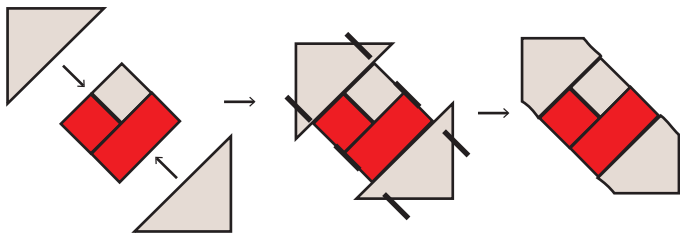
1. Sew together scrappy 3.5" square to background 3.5" square to create 3.5"x6.5" rectangle. Press seams open. Repeat for (23) pieces.



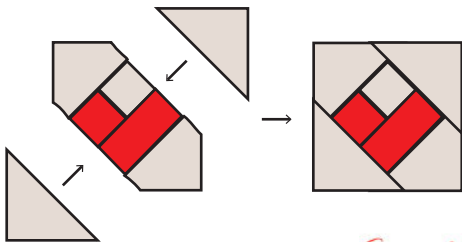
2. Sew together scrappy/background piece from Step 1 to background 3.5"x6.5" rectangle as per diagram. Press seams open. Square to 6.5". Repeat to create (23) pieces.



3. Sew opposite corners of piece from Step 2 to 7" half triangles per diagram. Cut away excess corners to 1/4" seam. Press seams open. Repeat for (23) pieces.

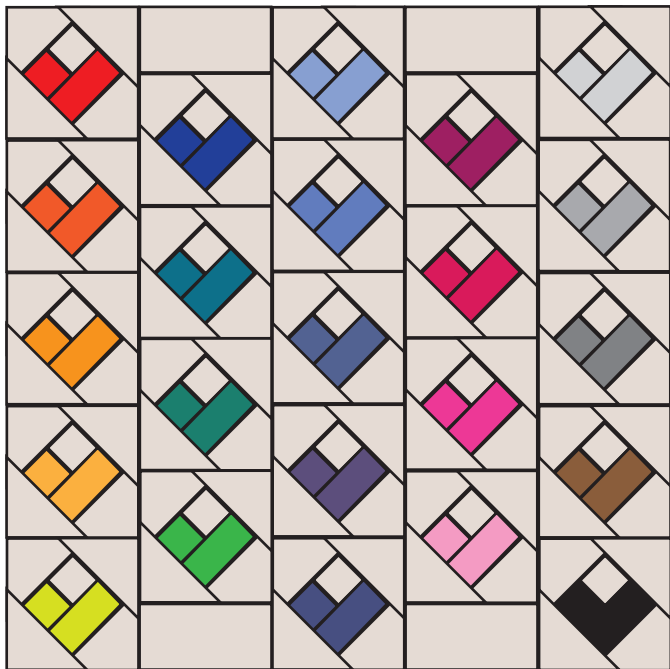


4. Sew remaining 7" half triangles to opposite corners of piece from Step 3, per diagram. Press seams open. Square to 10.5". Repeat for (23) heart blocks.



Assemble

5. Sew together heart blocks with remaining background 5.5"x10.5" rectangles to create the final quilt top, as per diagram.



Quilt and Bind

6. Quilt and bind as desired.

7. Share your quilt with us! #colorsoflovequilt #marygroundquilts #sewlsister